

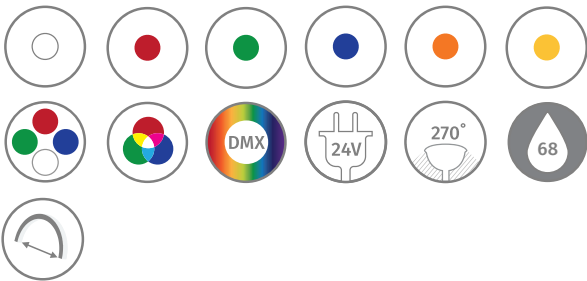
Date:	
Type:	
Firm Name:	
Project:	

EVERNEON

Elite Series

Everylite Datasheet Ver 3.0.1
Revision Date 07/2022

Available in custom ordered lengths or
5, 10, 20 and 50 foot rolls*



Description

Our best-selling product, the versatile and flexible features make this a designer's favorite choice. Elite offers a variety of options for single color applications, RGB, RGBW or DMX versions that can be customized.

Features

- High flexibility and easy to install, it can be easily bent to various shapes and angles.
- 24VDC low voltage input allow it to be used in locations where neon is unsuitable due to the possibility of breakage or electric shock.
- Better energy efficiency, only consumes 4watts/ft or less. This is about a quarter of the energy of miniature bulb light rope and a sixth of energy of traditional neon.
- Short cutting lengths, for a more precise fit in your applications.
- IP68 rated; protects against damage from impact, stress, weather and water intrusion.
- The EverNeon tube has a lumen maintenance of up to 90,000 hours. Plus, this easy-to-install system is backed by a limited warranty up to 36 months.

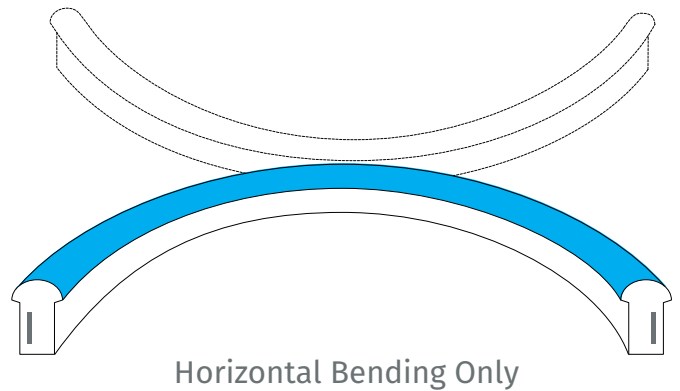
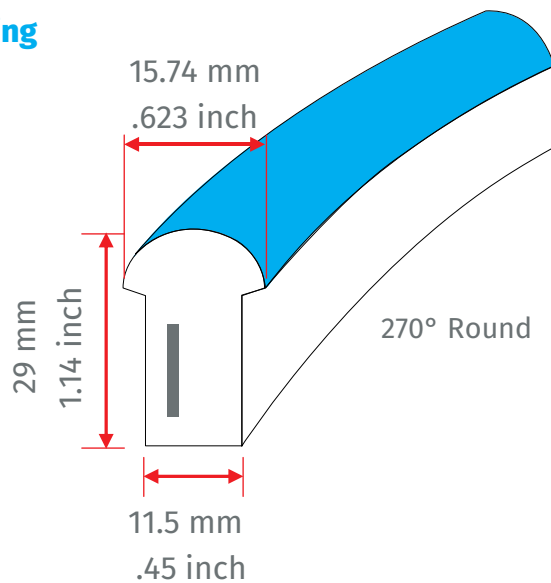
* Roll availability may vary based on color.



EverNeon Elite Series Specification

Item #	Wave Length	LED Color	Surface Color	Min Cutting Length	Luminous Flux/Ft	Power Consumption	Working Voltage	IP Rating	Min. Bend Diameter	LED Spacing	Max. Single Power Feed	Max. Double Power Feed
EN-ELT-W3-PH-24	3000K	White	White	3.28"	103.63lm/ft	4W/ft	24 VDC	IP68	4.72"	0.67"	30'	60'
EN-ELT-W4-PH-24	4000K	White	White	3.28"	115.82lm/ft	4W/ft	24 VDC	IP68	4.72"	0.67"	30'	60'
EN-ELT-W5-PH-24	5000K	White	White	3.28"	115.82lm/ft	4W/ft	24 VDC	IP68	4.72"	0.67"	30'	60'
EN-ELT-W6-PH-24	6500K	White	White	3.28"	115.82lm/ft	4W/ft	24 VDC	IP68	4.72"	0.67"	30'	60'
EN-ELT-RR-PH-24	630nm	Red	Red	4.92"	42.67lm/ft	4W/ft	24 VDC	IP68	4.72"	0.67"	30'	60'
EN-ELT-GG-PH-24	530nm	Green	Green	3.28"	85.34lm/ft	4W/ft	24 VDC	IP68	4.72"	0.67"	30'	60'
EN-ELT-BB-PH-24	475nm	Blue	Blue	3.28"	12.19lm/ft	4W/ft	24 VDC	IP68	4.72"	0.67"	30'	60'
EN-ELT-YY-PH-24	580nm	Yellow	Yellow	3.28"	74lm/ft	4W/ft	24 VDC	IP68	4.72"	0.67"	30'	60'
EN-ELT-AA-PH-24	595nm	Amber	Amber	3.28"	42.67lm/ft	4W/ft	24 VDC	IP68	4.72"	0.67"	30'	60'
EN-ELT-FX-PH-24	-	RGB	White	3.94"	-	4W/ft	24 VDC	IP68	4.72"	0.67"	20'	40'
EN-ELT-FW-PH-24	-	RGBW	White	3.94"	-	4W/ft	24 VDC	IP68	4.72"	0.67"	20'	40'
EN-ELT-FXS-PH-24	-	Smart RGB	White	4.92"	-	4W/ft	24 VDC	IP68	4.72"	0.67"	35'	70'
EN-ELT-FWS-PH-24	-	Smart RGBW	White	4.92"	-	4W/ft	24 VDC	IP68	4.72"	0.67"	35'	70'
EN-ELT-FWD-PH-24	-	DMX RGBW	White	6.56"	-	4W/ft	24 VDC	IP68	4.72"	0.67"	32'	65'

Drawing



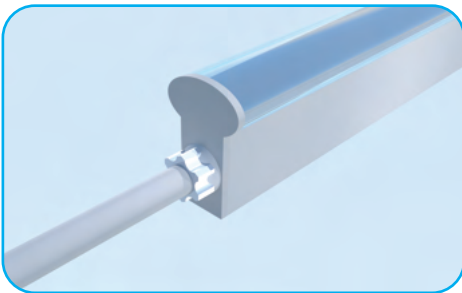
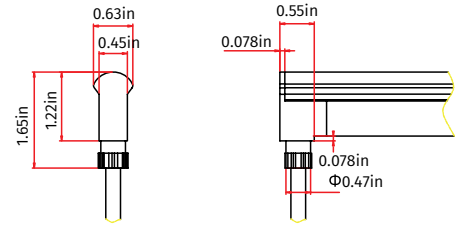
Accessories

Single injection mold (IP67)

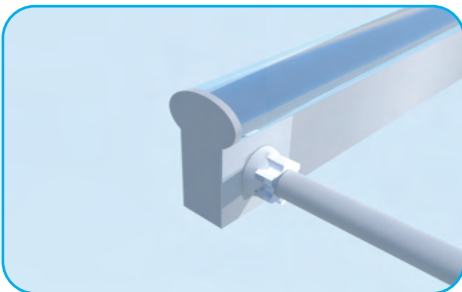
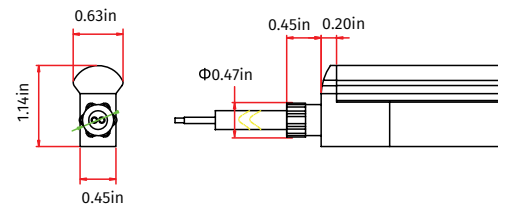
Front connector



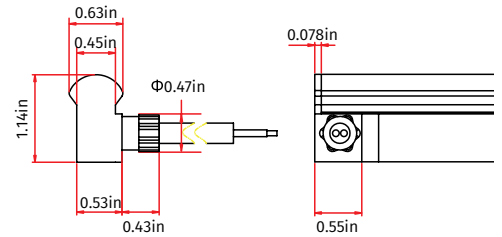
Bottom feed



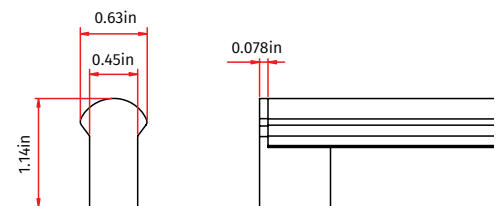
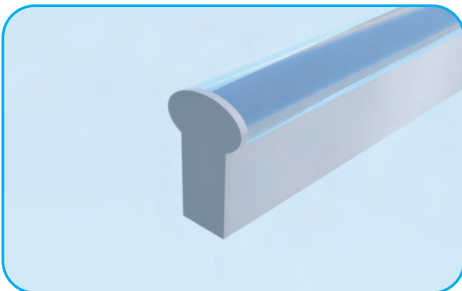
Front feed



Side feed



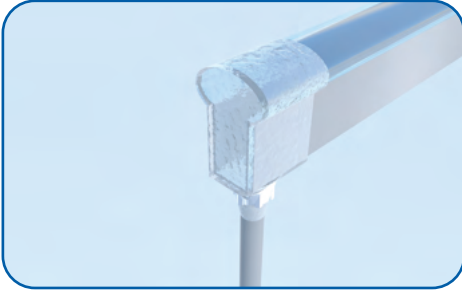
End Cap



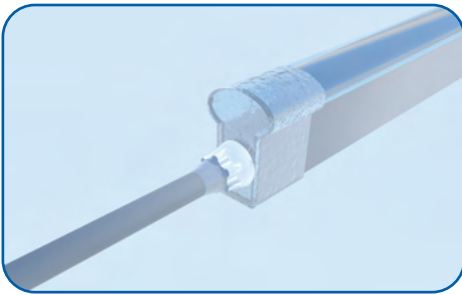
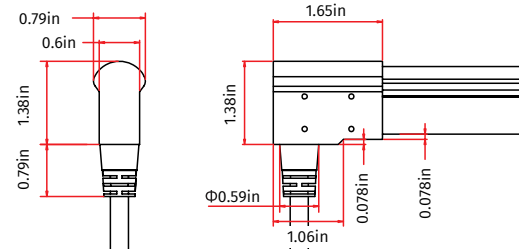
Accessories

Double Injection Mold (IP68)

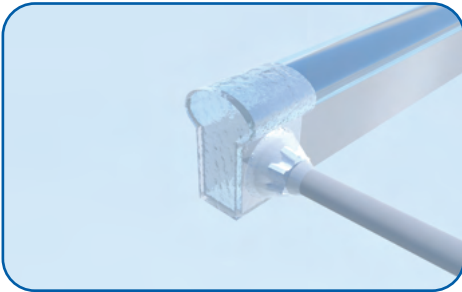
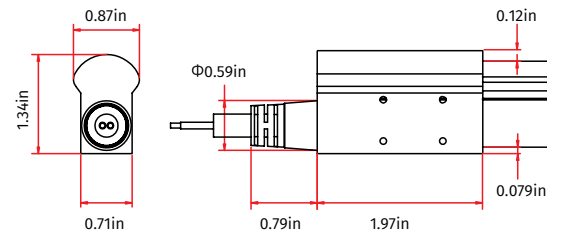
Front connector



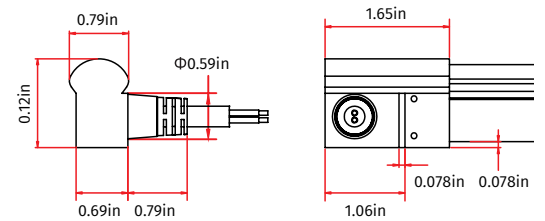
Bottom feed



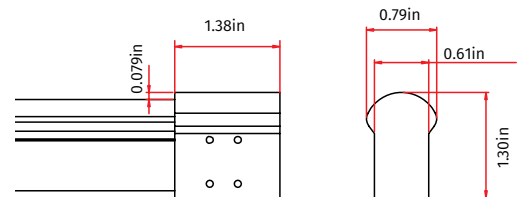
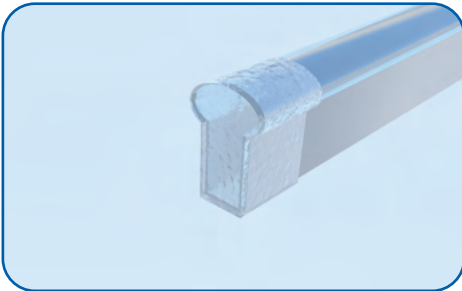
Front feed



Side feed



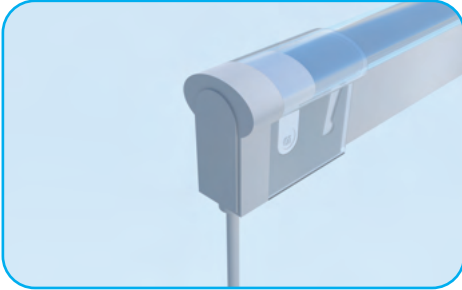
End Cap



Accessories

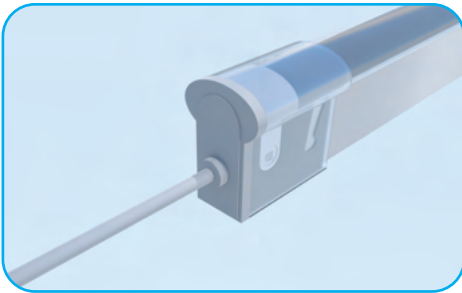
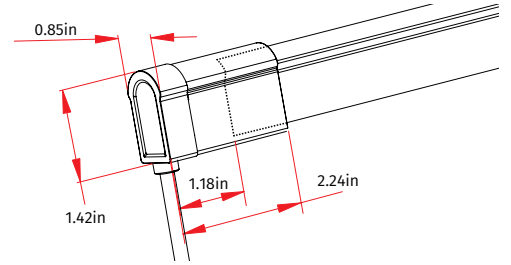
Snap Connector (IP65)

Front connector



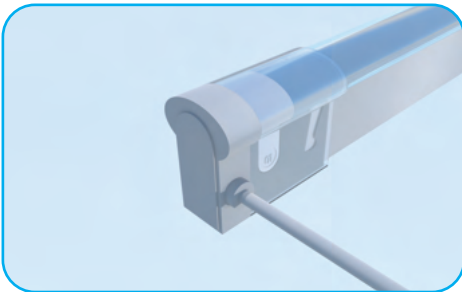
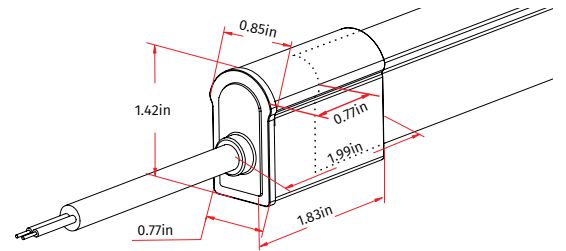
Bottom feed

EN-ELT-FCXX-SN-XB



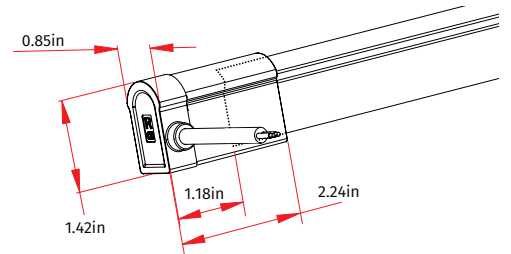
Front feed

EN-ELT-FCXX-SN-XF

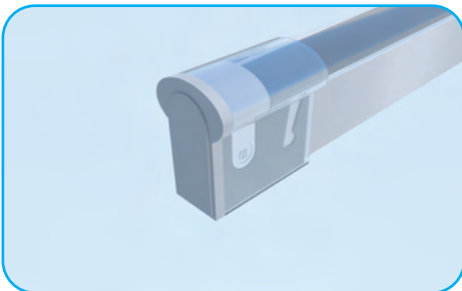


Side feed

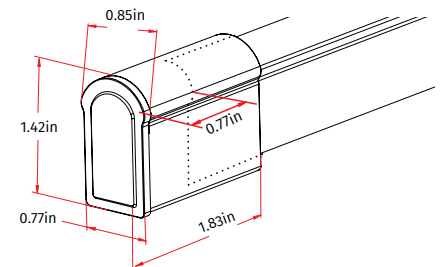
EN-ELT-FCXX-SN-XS



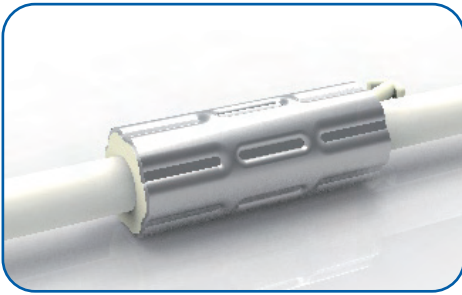
End Cap



EN-ELT-ECXX-X

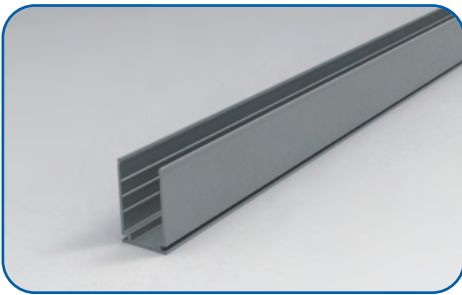
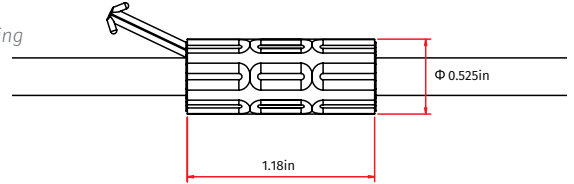


Accessories



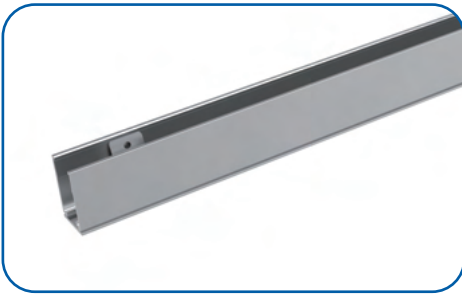
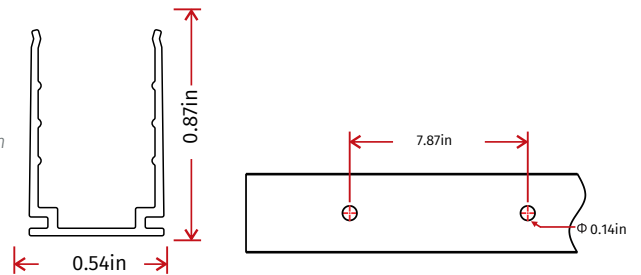
Waterproof ring

This specially engineered waterproofing ring come standard mounted on the power leads to prevent water-intrusion through the cable.



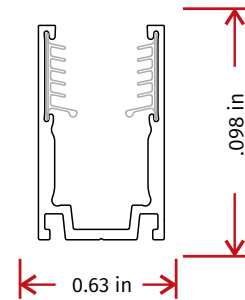
40" u-channel

This standard easy to use mounting track for the Everneon Series firmly holds the product into place and can be cut to any desired length.



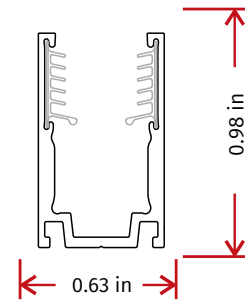
40" locking u-channel

The locking version of the standard mounting track brings peace of mind to installations where having a secure fit was a concern.



2"locking u-channel

This smaller version of the locking u-channel can be used to hold the Everneon product in place while maneuvering around the curves of the installation.



Testing

Testing Organization		Certificate Serial N°	Report Reference
UL 2108	UL	20160726-E360029	E360029-2013
CE-EMC	SGS	SZEM1702001259LMV	SZEM160600421302

Fixture Testing

Optical Testing

Spectrum Analysis	IES LM 79 (Lumen, CCT, CRI, XY, SDCM, wavelength)
Photometric Distribution	IES LM 73 (lumen intensity distribution & Lux diagram)
Lumen Maintenance & Lifetime	IES LM84 & IES TM28

Temperature Testing

Normal Temperature Test	UL1598 & UL2388 & IEC60598-1 & IEC60598-2-21
Abnormal Operation Test	UL1598 & UL2388 & IEC60598-1 & IEC60598-2-21

Durability Testing

Bending Test	Manufacturer-defined, 500 cycles
Swing Test	UL2388, >750 cycles
Tensile Test	Manufacturer-defined, > the weight of light in max. connection length double feed
Twist Test	Max connection length double feed Manufacturer-defined, >200 cycles
Ball Impact	UL1598 & UL2388 & IEC60598-1 & IEC60598-2-21
IK07 IK08	IEC62262

Environmental Testing

Chlorinated Water Immersion	BG9667, PH6.8-7.6, free chlorine 0.3-0.6mg/L
Salt Water Immersion	IEC60598-1, Salinity 4%
Salt Spray Test	IEC68-2-11
Outdoor Exposure	Manufacturer-defined
Flame Resistance	UL94
UV Exposure	ASTMG 154, ISO 4892-3, UVA@340nm
IPX5 IPX6 IPX7 IPX8	IEC60529
Temperature Shock	Manufacturer-defined, -40°C -60°C (typical temperature range)
Constant Temperature	Manufacturer-defined

