

Date:	
Type:	
Firm Name:	
Project:	



# C-ART-EU24 DMX Controller

Everylite Datasheet Ver 2.2  
Revision Date 04/2020



## Features

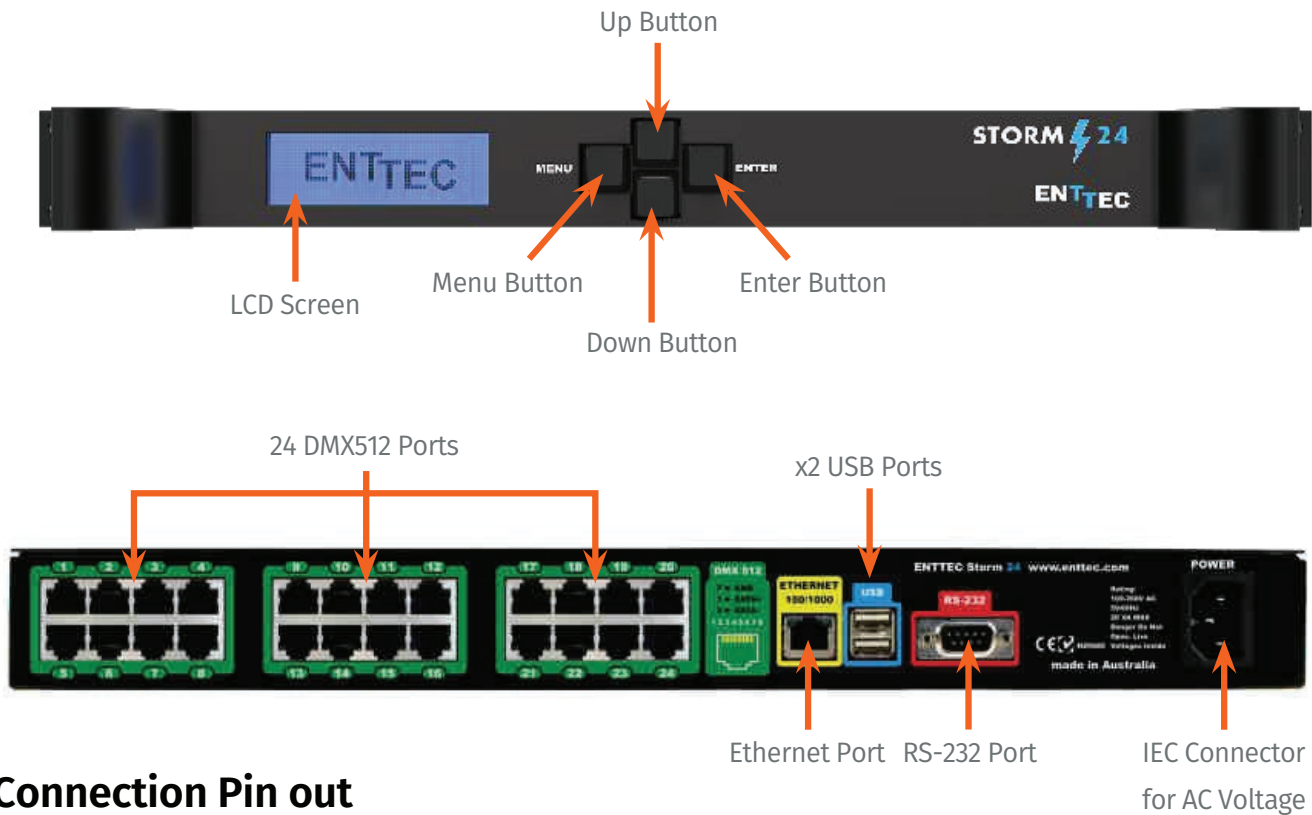
- 24 DMX512 universes in live mode (computer)
- eDMX to DMX512 converter
- Multi-Protocol Support ArtNet/sACN/ESP
- Ethernet connectivity for programming/control/supervision
- LCD display (Status on System and Data flow)
- Network communication. Control lighting remotely
- iPhone/iPad/Android remote and programming apps
- Windows/Mac software to set dynamic colors/effects
- Ultra-fast DDR memory and 1 Gigabit Ethernet port



## Technical Parameters

Input Power	Output Protocol	Programmability	Connections
100 ~ 260 VAC	DMX512	PC, Mac, Tablet, Smart-phone	IEC Connection for AC Voltage, 24DMX (RJ-45) ports, RJ-45 connector for a 10Base-T Ethernet Connection, RS232 port, 2 USB ports (un-used)
Buttons	Working Temperature	Standards	Dimensions (L x W x H)
4 buttons (Menu, Up, Down and Enter)	( 32 ~122 ) °F	EC	(17 x 8.2 x 1.3) in

## Hardware



## Connection Pin out

DMX pinout (RJ-45)	RS232
PIN 1: DATA +	PIN 2: TX
PIN 2: DATA -	PIN 3: RX
PIN 7: GND	PIN 5: GND



## Interfaces

### The LCD Menu

The “Menu” button acts as the “Back” button, which takes you to the previous Menu/Screen.

The “Enter” button goes into the selected option on the screen and activating the option.

The “Top” & “Bottom” button are used to navigate/scroll through the options on any screen.

The currently selected option is highlighted with a white background on the screen.

### The Selection Menu

While on the Selection Menu, you can select the option by pressing the Enter button, when that option is highlighted.

### Load Profile

Lists all available profiles on the Storm24, list can be scrolled using up & down keys. Scrolling indicator is visible when the list allows scrolling.

Pressing Enter at the selected profile will activate the profile.

### Setup

Setup screen allows changing the IP address of the unit via “Change IP” or doing Factory Reset.

```
STORM24 - ART-NET-0-DMX
DHCP FAILED
Packets: 0 / S
press a key to enter
```

```
1-load profile
2- Setup
3-Status
4-Restart
```

```
Art-Net24-DMX24 ^
SACN - DMX24
SELF_TEST_LED
Art-Net16U
```

```
1-Change IP
2-Factory Reset
```



## Interfaces

### Change IP

This screen gives two options DHCP or Static IP. When Static IP is selected, the screen allows you to change the IP address using the Top and Bottom button to croll the digits and the Menu & Enter buttons to select the segment. Once you are on the last segment of the IP address, pressing the Enter button, will activate the IP address. It will take a few seconds for the change to go through, please wait 30 seconds, before attempting to try again.

Change IP Address  
IP: 192.168.001.003

### Factory Reset

Activating Factory Reset, leads to a simple prompt confirming your action. Once confirmed, the Factory Reset will take a few seconds to run. It will end up deleting all your profiles, as well as any saved settings. Please use this only when needed or as directed by a technical support associate.

F-Reset in progress  
please wait ...

### Status

Status Screen, allows the System & Network options. Both the Status screens are read-only and provide information about the system and Networking. These require no user-input and serve as a way of checking the performance of the controller.

1-System  
2-Network

### Restart

Restart Screen, when activated, prompts for the user to confirm selection.

Once confirmed, the controller will stop the engine and restart the system. While rebooting the LCD screen will change between a couple of screens, and the LCD Main Menu will be visible, once the system is fully ready.

1-YES  
2-NO

System Restarting  
Please wait ...

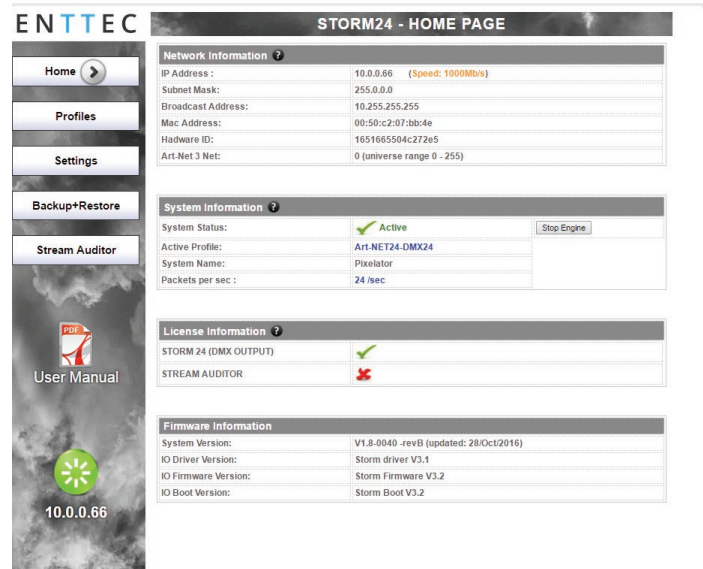


## Interfaces

### Web Interface

The controller is configured, controlled and programmed through a web browser interface running on a computer system located on the same Local Area Network (LAN). Any modern web browser, such as Chrome, Firefox, Internet Explorer, Safari or Opera, running under any operating system, including Windows xP or Vista, Mac OS or Linux can be used.

Throughout the Web Interface, helpful hints are displayed when an user hover the mouse over the “Help” icon.



**ENTTEC STORM24 - HOME PAGE**

**Network Information**

- IP Address: 10.0.0.66 (Speed: 1000Mbps)
- Subnet Mask: 255.0.0.0
- Broadcast Address: 10.255.255.255
- Mac Address: 00:50:c2:07:bb:4e
- Hardware ID: 1651665504c272e5
- Art-Net 3 Net: 0 (universe range 0 - 255)

**System Information**

- System Status: ✔ Active Stop Engine
- Active Profile: Art-NET24-DMX24
- System Name: Pixelator
- Packets per sec: 24 /sec

**License Information**

- STORM 24 (DMX OUTPUT) ✔
- STREAM AUDITOR ✘

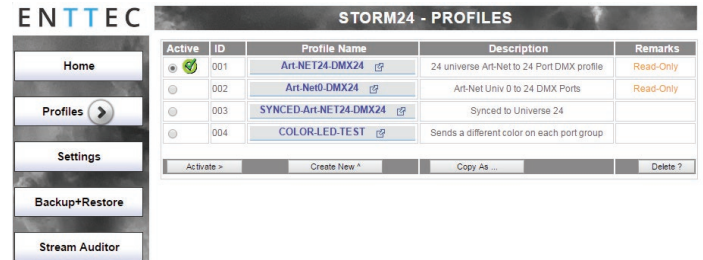
**Firmware Information**

- System Version: V1.8-0040 -revB (updated: 28/Oct/2016)
- IO Driver Version: Storm driver V3.1
- IO Firmware Version: Storm Firmware V3.2
- IO Boot Version: Storm Boot V3.2

Left sidebar: Home, Profiles, Settings, Backup+Restore, Stream Auditor, User Manual, 10.0.0.66

### Profiles

From this screen you can manage your profiles: As you will notice in the “Remarks” column, the factory default profiles are ‘Read-only’. If you wish to modify one of them, you will first need to copy the profile and re-name it. Once the profile has been copied you can modify it to fit your needs.



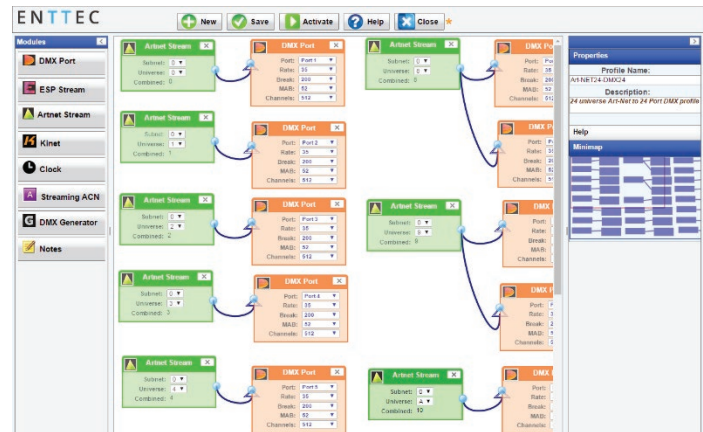
**ENTTEC STORM24 - PROFILES**

Active	ID	Profile Name	Description	Remarks
<input checked="" type="checkbox"/>	001	Art-NET24-DMX24	24 universe Art-Net to 24 Port DMX profile	Read-Only
<input type="checkbox"/>	002	Art-Net0-DMX24	Art-Net Univ 0 to 24 DMX Ports	Read-Only
<input type="checkbox"/>	003	SYNCED-Art-Net24-DMX24	Synced to Universe 24	
<input type="checkbox"/>	004	COLOR-LED-TEST	Sends a different color on each port group	

Buttons: Activate, Create New, Copy As, Delete

### Profile Editor

Create a new profile or edit an existing one using the profile-editor. This opens in a new page in your web browser. Select a module on the left and the right panel will provide help about that panel. Connect a module to another using wires from one point to another.



**ENTTEC Profile Editor**

Left sidebar: Modules (DMX Port, ESP Stream, Arnet Stream, Kinet, Clock, Streaming ACN, DMX Generator, Notes)

Main area: A network diagram showing connections between 'Art-Net Stream' modules and 'DMX Port' modules. Each module displays details like Subnet, Universe, Rate, Break, MAB, and Channels.

Right sidebar: Properties (Profile Name: Art-Net24-DMX24, Description: 24 universe Art-Net to 24 Port DMX profile), Help, Micromap



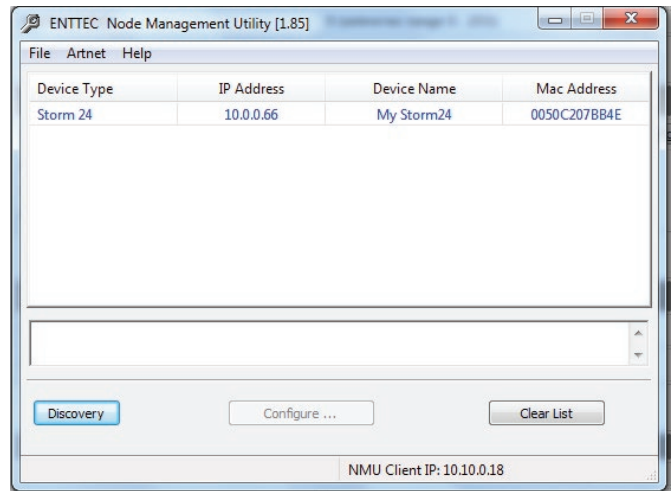
## Interfaces

### NMU

NMU (Node Management Utility) is free Windows and OSX application used to manage compatible eDMX (DMX over Ethernet) nodes. NMU will not directly allow you to configure the controller itself, but it can help you find your unit's IP address and then open a browser window to make the required changes.

To employ the NMU, follow this set of instructions:

- 1.- Download and Install the application from our website [XXXXXXXXXX](#).
- 2.- Ensure your controller is hooked up physically to the same physical network as the computer you're running the NMU.
- 3.- Start the application.
- 4.- Press "Discovery" button.
- 5.- Select the controller.
- 6.- An IP Address will be shown next to any controller with its location.
- 7.- Click on the link and open the browser window for that controller, if desired.



### Updating the Application Firmware

You can update the firmware on the controller, via the web browser. Find new firmware files (They are stored as \*.bin files in the [XXXX](#) website). Download them to your desktop and then follow instructions in the controller's web browser page, under the Settings section.

NOTE: While the firmware is being updated, please do not power off the unit, please wait until the web page is processing (up to 2 min).

If the web page doesn't refresh automatically, please open the home page on the browser manually, and verify that the update has succeeded.



## Safety Information

1. The product shall be installed and serviced by a qualified person.
2. This product is a non-waterproof, indoor rated device. Please avoid the sun and rain.
3. Good heat dissipation will prolong the working life of the controller, please ensure good ventilation.
4. Please check if the output voltage of any power supplies used comply with the working voltage of the products.
5. Ensure all wire connections and polarities are correct and secure before applying power to avoid any damages to the LED lights.
6. If a fault occurs please return the product to your supplier. Do not attempt to fix this product by yourself.

## Dimensions

