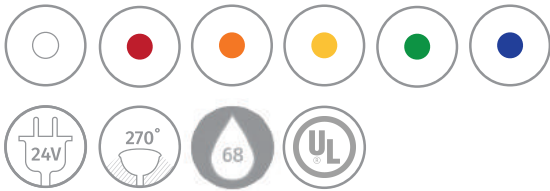


Everylite Datasheet Ver 1.2

Single Color iFlex

Available in 5, 10, and 20 feet



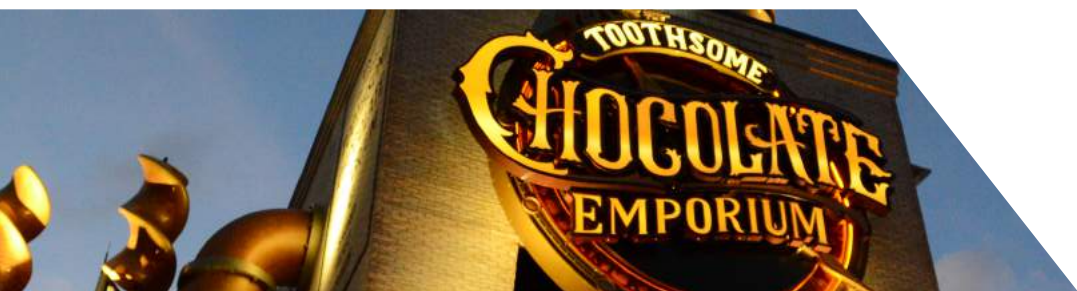
Description

Appreciate unbridled opportunity in improving your design scheme with the iFlex Neon from Everylite. Create breathtaking lighting projects and appealing accent lighting without the normal stresses of working with delicate neon glass. Everylite's iFlex Neon is the perfect replacement for traditional neon and cold cathode tubes. iFlex is very simple to install and is very light to transport. Its short cut length and ability to be shaped in the field, make it the ideal choice for sign installers.

The iFlex 24VDC LED light with continuous even illumination is suitable as an alternative to neon lighting systems. Everylite's iFlex delivers remarkably fluid color transitions by using advanced LED lighting technology which translates to a discernibly richer and truer color. It also provides an economical LED solution for coves, architectural lighting, restaurant/bar décor, home theaters, sign lighting and many other linear applications, saving up to 90% in energy costs when compared to traditional neon.

Features

- High Flexibility and seamless modular design provide a simple yet versatile installation process
- Low 24VDC input simplifies power considerations, providing lower risk factor and UL-Certified usage in a variety of scenarios
- 4W/ft power consumption six times more efficient than traditional neon
- Wide 270° illumination angle
- IP68 Outdoor rating for rugged conditions
- Rated for 50,000 hours
- Available in 5, 10, 20, and 50 feet



Single Color iFlex Specification

Item #	LED Color	Surface Color	Wave Length	Min Cutting Length	Luminous Flux/Ft	IP Grade	Working Voltage	Power Consumption	Min. Bend Diameter	LED Spacing	LED Quantity	Max Connection
IF-B270-W3	White	White	3000K	3.28"	97lm/ft							
IF-B270-W6	White	White	6000K	3.28"	97lm/ft							
IF-B270-RR	Red	Red	630nm	4.92"	36lm/ft							
IF-B270-GG	Green	Green	530nm	3.28"	39lm/ft	IP68	24V	4W/ft	4.72"	0.55"	21.9/ft	30 Ft. if single-end feed 60Ft. if double-end feed
IF-B270-BB	Blue	Blue	470nm	3.28"	8lm/ft							
IF-B270-AA	Amber	Amber	540nm	3.28"	96lm/ft							
IF-B270-YY	Yellow	Yellow	580nm	3.28"	74lm/ft							

Accessories



Factory Sealed Connectors

Pre-made lengths of iFlex come factory sealed with front connectors and/or end caps which provide perfect IP68 rated protection. Runs of iFlex are available in 5, 10, and 20 foot lengths. Custom run lengths and custom front connector options are also available on a project basis. Please contact your local Everylite sales representative for further details.

*Power adapter and remote sold separately.



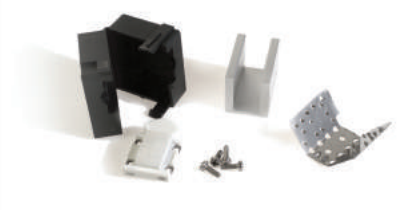
Single Color Front Connector
IF-FC01B/IF-FC02B



Single Color Jumper
IF-JP



End Cap
IF-EC



40" U-Channel
IF-UC-40



2" U-Channel with lock
IF-LUC-2



iFlex Cutter
IF-CUT



*Rubber gasket is mounted on screw-in front connector, screw-in end cap, screw-in jumper.

Drawing

