

## EVERNEON

# Freedom Series

Everylite Datasheet Ver 1.3



## Description

This series truly honors its name. Freedom creates amazing new possibilities, and because of its square shape and versatility in offering more than one bending option, you can interchange them in the same application to achieve different possibilities in corners or shapes.

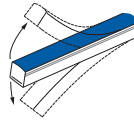
This product can perform exceptionally in architectural applications such as border lighting, or advanced bending shapes including vertical and horizontal. It also provides a seamless look.

## Features

- 160° degree beam angle perfect for recessed installation
- Built in constant current circuit board keeps even illumination without voltage drop
- Available in single color, DMX or RGB options
- Horizontal and vertical bending available with a 5.91" bending radius

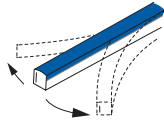


## EverNeon Freedom Series Specification



### Vertical Bending

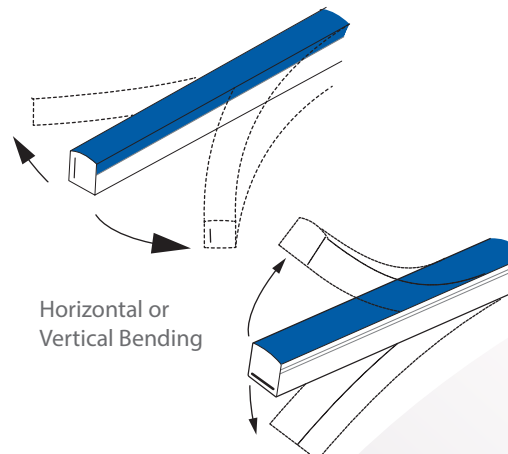
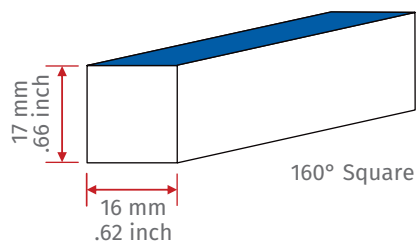
Item #	LED Color	Surface Color	Wave Length	Min Cutting Length	Luminous Flux/Ft	Power Consumption	Working Voltage	IP Grade	Min. Bend Diameter	LED Spacing	LED Quantity	Max Connection
EN-FDM-W3-PV	White	White	3000K	2.19"	137.16lm/ft							
EN-FDM-W4-PV	White	White	4000K	2.19"	137.16lm/ft							
EN-FDM-W5-PV	White	White	5000K	2.19"	137.16lm/ft							
EN-FDM-W6-PV	White	White	6500K	2.19"	121.92lm/ft							
EN-FDM-RR-PV	Red	Red	630nm	3.28"	45.72lm/ft							
EN-FDM-GG-PV	Green	Green	530nm	2.19"	121.92lm/ft	4w/ft	24V	IP68	11.81"	0.37"	33/ft	30 Ft. if single-end feed
EN-FDM-BB-PV	Blue	Blue	475nm	2.19"	19.81lm/ft							60Ft. if double-end feed
EN-FDM-YY-PV	Yellow	Yellow		2.19"	74lm/ft							
EN-FDM-AA-PV	Amber	Amber	595nm	3.28"	45.72lm/ft							
EN-FDM-FS-PV	Smart	White		3.28"								
EN-FDM-FX-PV	RGB	White		3.28"								
EN-FDM-FW-PV	RGBW	White		3.28"								



### Horizontal Bending

Item #	LED Color	Surface Color	Wave Length	Min Cutting Length	Luminous Flux/Ft	Power Consumption	Working Voltage	IP Grade	Min. Bend Diameter	LED Spacing	LED Quantity	Max Connection
EN-FDM-W3-PH	White	White	3000K	2.19"	128.02lm/ft							
EN-FDM-W4-PH	White	White	4000K	2.19"	146.30lm/ft							
EN-FDM-W5-PH	White	White	5000K	2.19"	146.30lm/ft							
EN-FDM-W6-PH	White	White	6500K	2.19"	137.16lm/ft							
EN-FDM-RR-PH	Red	Red	630nm	3.28"	39.62lm/ft							
EN-FDM-GG-PH	Green	Green	530nm	2.19"	31.44lm/ft	4w/ft	24V	IP68	11.81"	0.37"	33/ft	30 Ft. if single-end feed
EN-FDM-BB-PH	Blue	Blue	475nm	2.19"	1524lm/ft							60Ft. if double-end feed
EN-FDM-YY-PH	Yellow	Yellow		2.19"	74lm/ft							
EN-FDM-AA-PH	Amber	Amber	595nm	3.28"	39.62lm/ft							
EN-FDM-FS-PH	Smart	White		3.28"								
EN-FDM-FX-PH	RGB	White		3.28"								
EN-FDM-FW-PH	RGBW	White		3.28"								

## Drawing



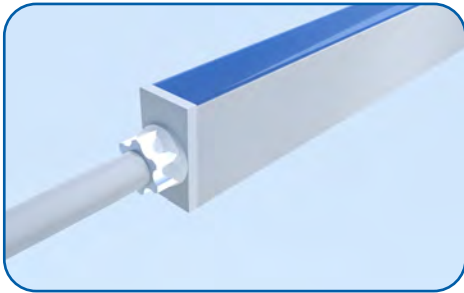
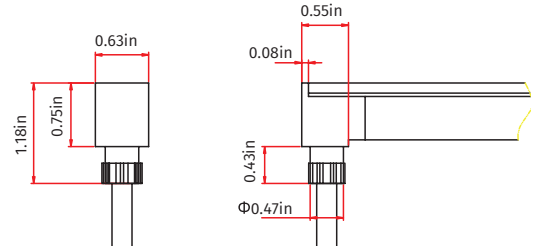
Accessories

Single injection mold

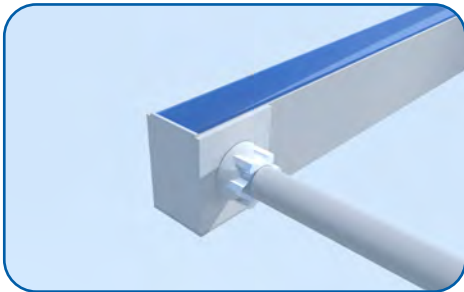
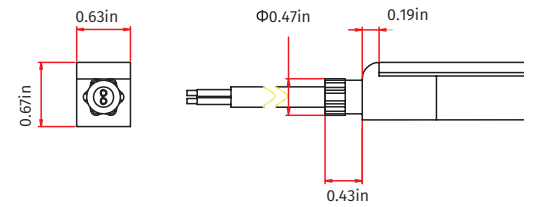
Front connector



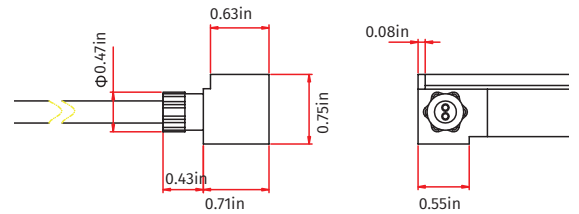
*Bottom feed*



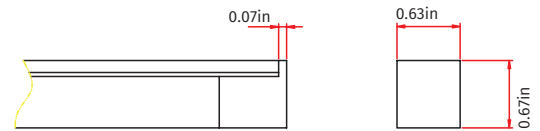
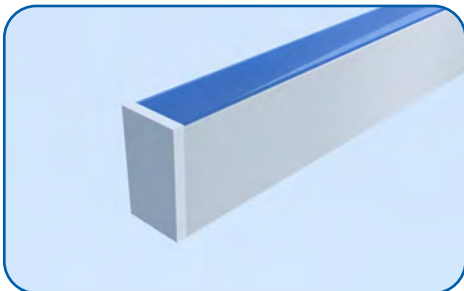
*Front feed*



*Side feed*



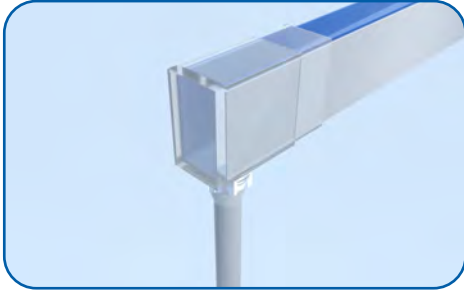
End Cap



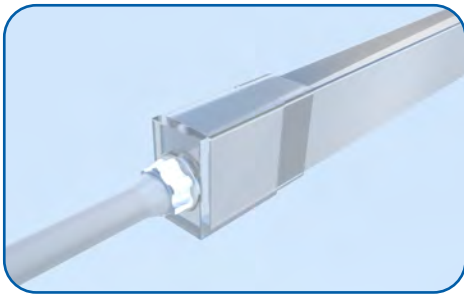
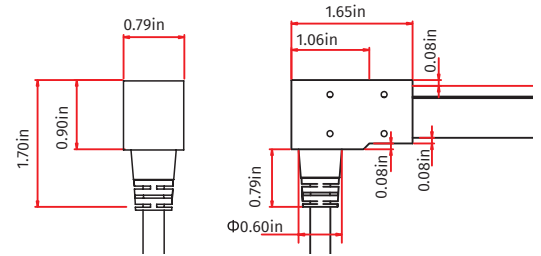
Accessories

Double Injection Mold

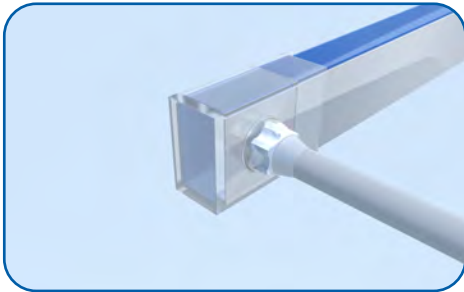
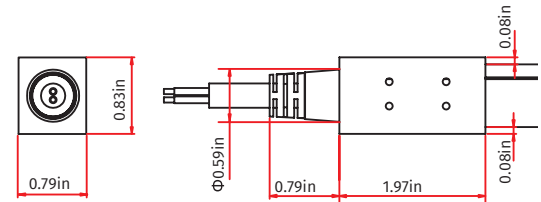
Front connector



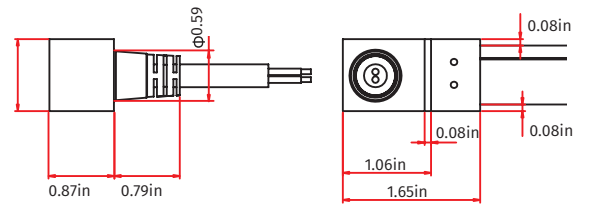
Bottom feed



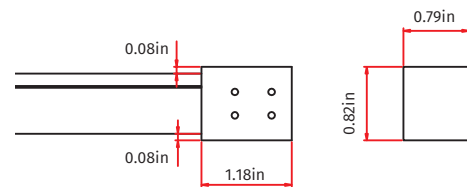
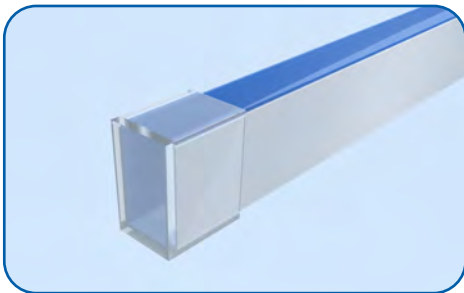
Front feed



Side feed



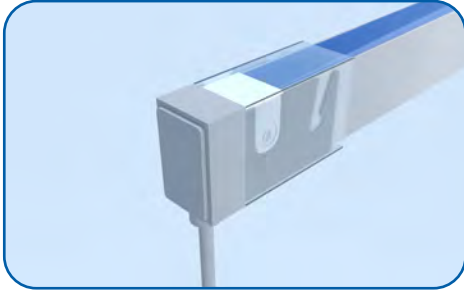
End Cap



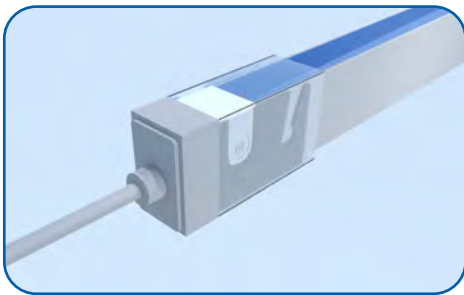
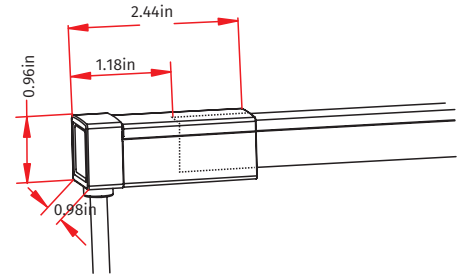
Accessories

**Snap Connector**

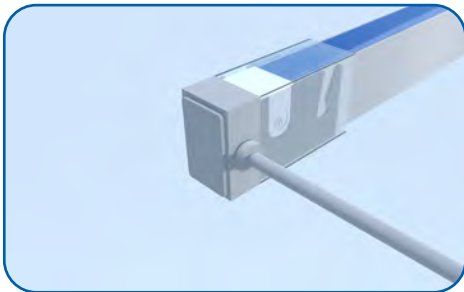
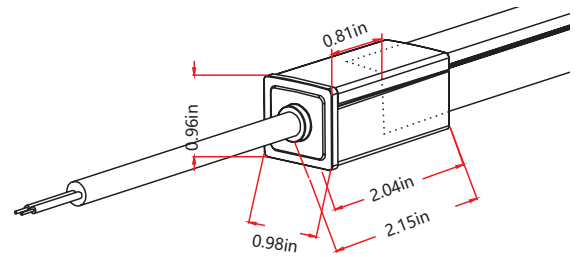
Front connector



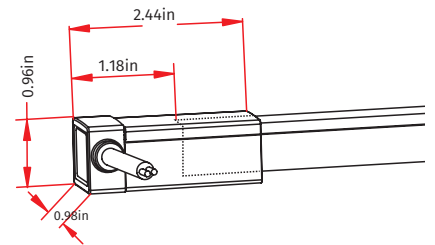
*Bottom feed*



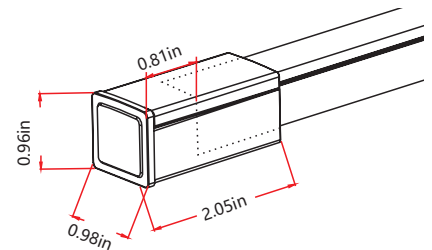
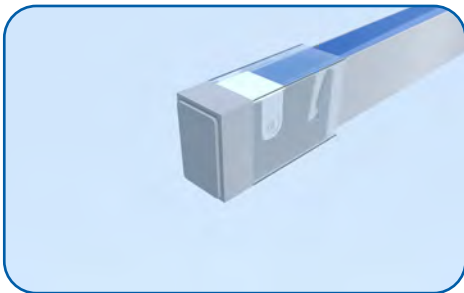
*Front feed*



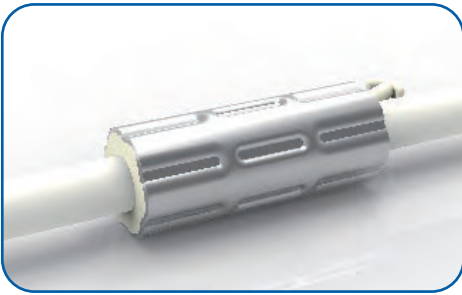
*Side feed*



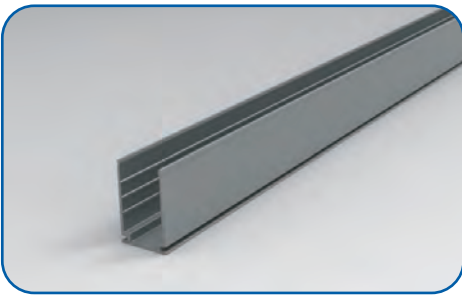
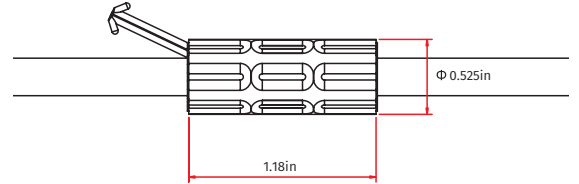
End Cap



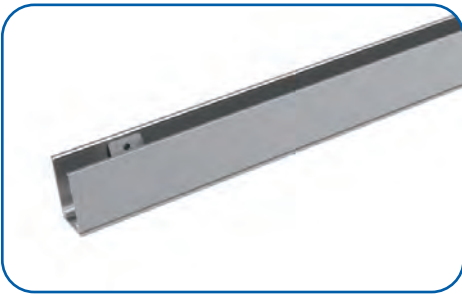
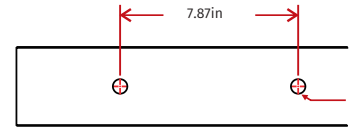
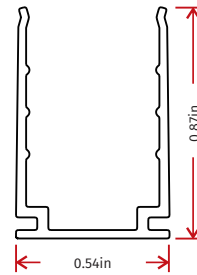
Accessories



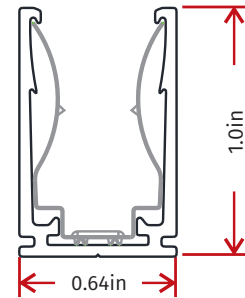
Waterproof ring



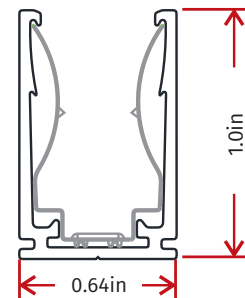
40" and 48" u-channel



48" lock u-channel



2" lock u-channel



## Testing

Testing Organization		Certificate Serial N°	Report Reference
UL 2108	UL	20160726-E360029	E360029-2013
CE-EMC	SGS	SZEM1702001259LMV	SZEM160600421302

## Fixture Testing

### Optical Testing

Spectrum Analysis	IES LM 79 (Lumen, CCT, CRI, XY, SDCM, wavelength)
Photometric Distribution	IES LM 73 (lumen intensity distribution & Lux diagram)
Lumen Maintenance & Lifetime	IES LM84 & IES TM28

### Temperature Testing

Normal Temperature Test	UL1598 & UL2388 & IEC60598-1 & IEC60598-2-21
Abnormal Operation Test	UL1598 & UL2388 & IEC60598-1 & IEC60598-2-21

### Durability Testing

Bending Test	Manufacturer-defined, 500 cycles
Swing Test	UL2388, >750 cycles
Tensile Test	Manufacturer-defined, > the weight of light in max. connection length double feed
Twist Test	Max connection length double feed Manufacturer-defined, >200 cycles
Ball Impact	UL1598 & UL2388 & IEC60598-1 & IEC60598-2-21
IK07 IK08	IEC62262

### Environmental Testing

Chlorinated Water Immersion	BG9667, PH6.8-7.6, free chlorine 0.3-0.6mg/L
Salt Water Immersion	IEC60598-1, Salinity 4%
Salt Spray Test	IEC68-2-11
Outdoor Exposure	Manufacturer-defined
Flame Resistance	UL94
UV Exposure	ASTMG 154, ISO 4892-3, UVA@340nm
IPX5 IPX6 IPX7 IPX8	IEC60529
Temperature Shock	Manufacturer-defined, -40°C -60°C (typical temperature range)
Constant Temperature	Manufacturer-defined

