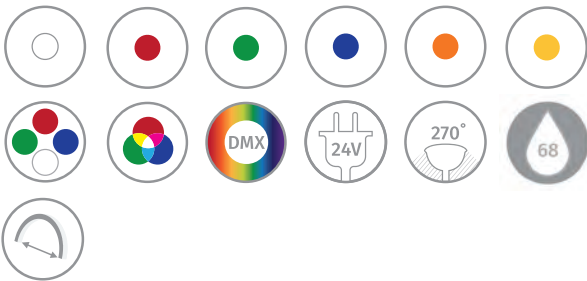


EVERNEON

Elite Series

Everylite Datasheet Ver 1.4

Available in custom ordered lengths or
5, 10, 20 and 50 foot rolls*



Description

Our best-selling product, the versatile and flexible features make this a designer's favorite choice. Elite offers a variety of options for single color applications, RGB, RGBW or DMX versions that can be customized.

Features

- High flexibility and easy to install, it can be easily bent to various shapes and angles.
- 24VDC low voltage input allow it to be used in locations where neon is unsuitable due to the possibility of breakage or electrocution.
- Better energy efficiency, only consumes 4watts/ft or less. This is about a quarter of the energy of miniature bulb light rope and a sixth of energy of traditional neon.
- Short cutting lengths, for a more precise fit in your applications.
- IP68 rated; protects against damage from impact, stress, weather and water intrusion.
- The EverNeon tube has a lumen maintenance of up to 90,000 hours. Plus, this easy-to-install system is backed by a limited warranty up to 36 months.

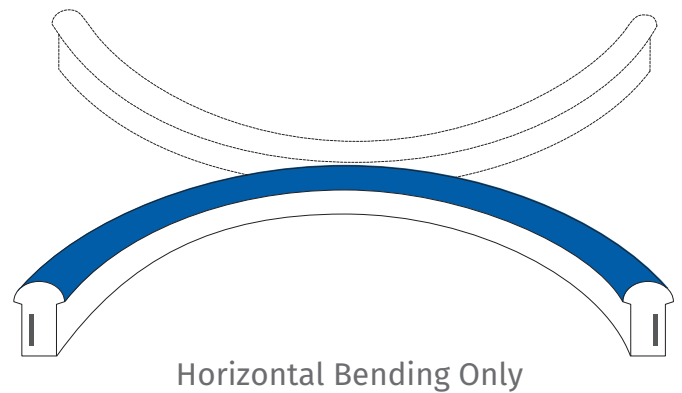
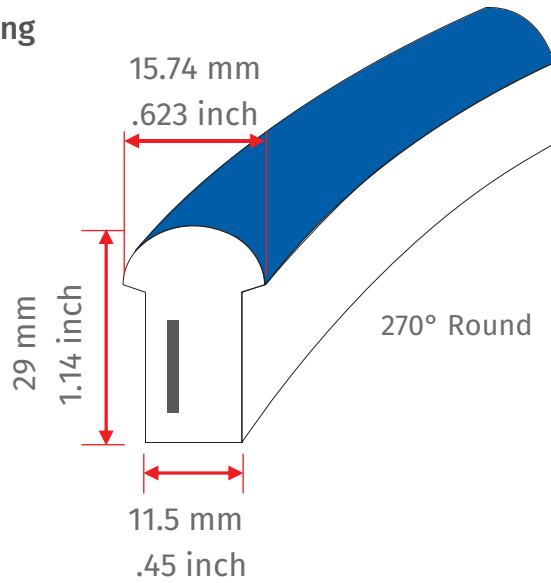
* Roll availability may vary based on color.



EverNeon Elite Series Specification

Item #	Wave Length	LED Color	Surface Color	Min Cutting Length	Luminous Flux/Ft	Power Consumption	Working Voltage	IP Grade	Min. Bend Diameter	LED Spacing	LED Quantity	Max Connection
EN-ELT-W3-PH-24	3000K	White	White	3.28"	103.63lm/ft	4W/ft						
EN-ELT-W4-PH-24	4000K	White	White	3.28"	115.82lm/ft	4W/ft						
EN-ELT-W5-PH-24	5000K	White	White	3.28"	115.82lm/ft	4W/ft						
EN-ELT-W6-PH-24	6500K	White	White	3.28"	115.82lm/ft	4W/ft						
EN-ELT-RR-PH-24	630nm	Red	Red	4.92"	42.67lm/ft	4W/ft						
EN-ELT-GG-PH-24	530nm	Green	Green	3.28"	85.34lm/ft	4W/ft	24V	IP68	4.72"	0.55"	22 led/ft	32.81 Ft. if single feed 62.62 Ft. if double feed
EN-ELT-BB-PH-24	475nm	Blue	Blue	3.28"	12.19lm/ft	4W/ft						
EN-ELT-YY-PH-24	580nm	Yellow	Yellow	3.28"	74lm/ft	4W/ft						
EN-ELT-AA-PH-24	595nm	Amber	Amber	3.28"	42.67lm/ft	4W/ft						
EN-ELT-FS-PH-24		Smart	White	4.92"		4W/ft						
EN-ELT-FX-PH-24		RGB	White	3.94"		4W/ft						
EN-ELT-FW-PH-24		RGBW	White	3.94"		4W/ft						

Drawing



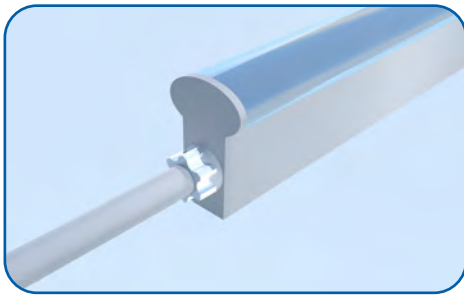
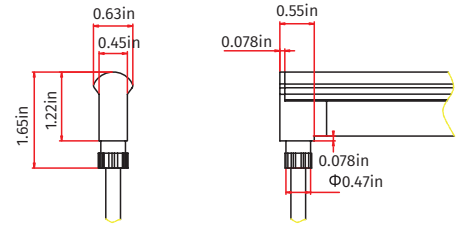
Accessories

Single injection mold

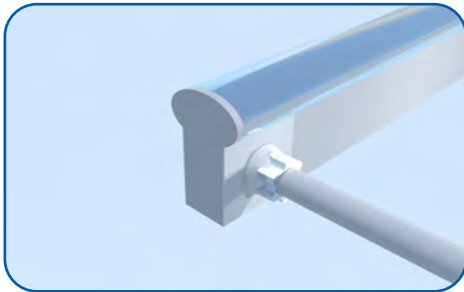
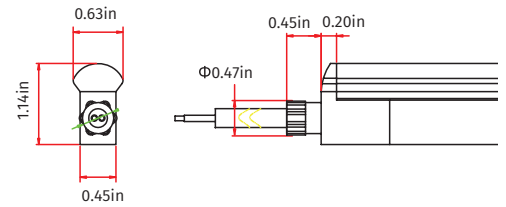
Front connector



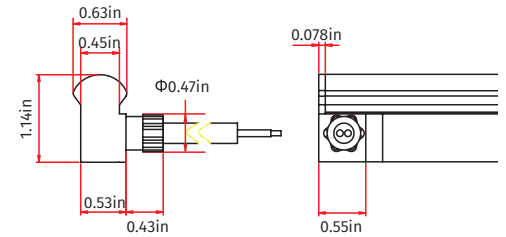
Bottom feed



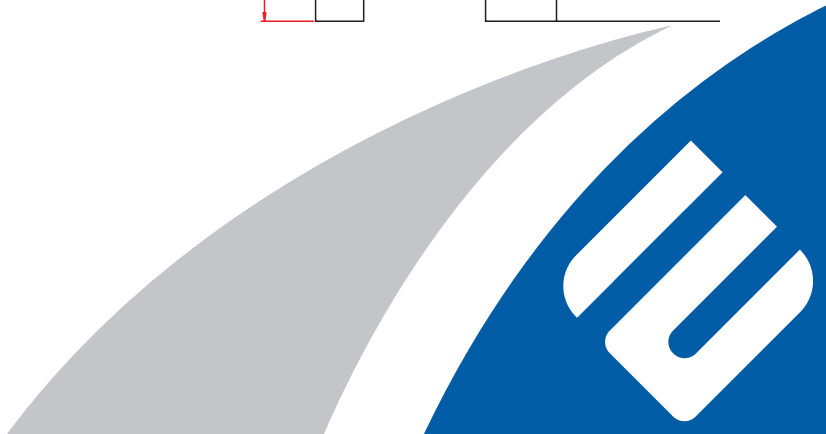
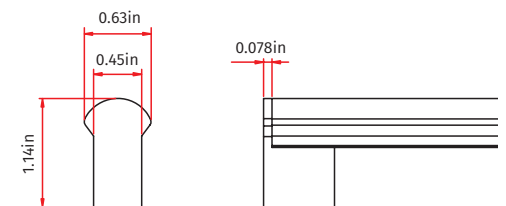
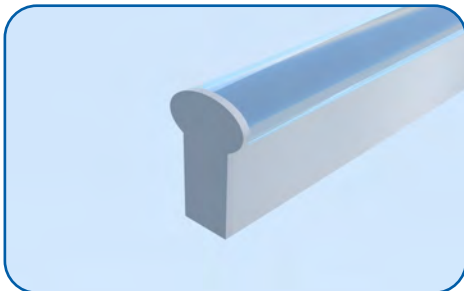
Front feed



Side feed



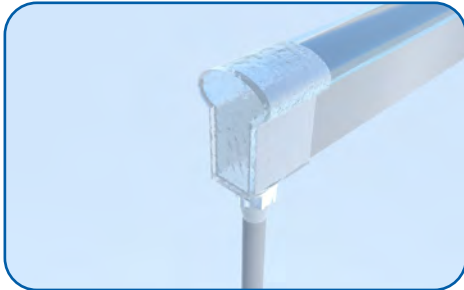
End Cap



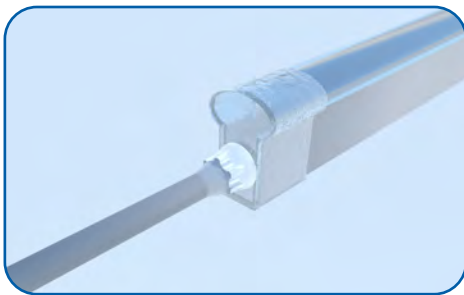
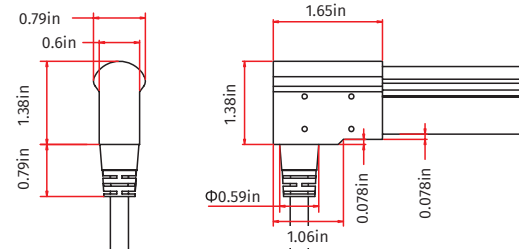
Accessories

Double Injection Mold

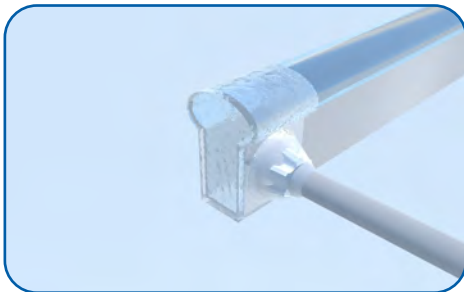
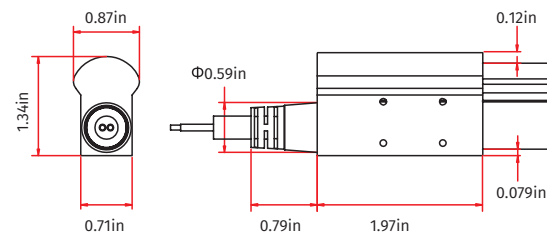
Front connector



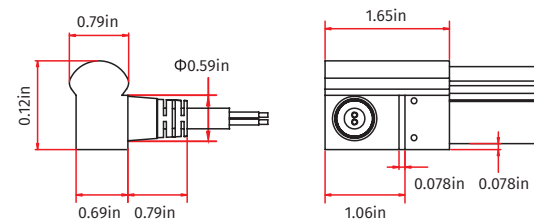
Bottom feed



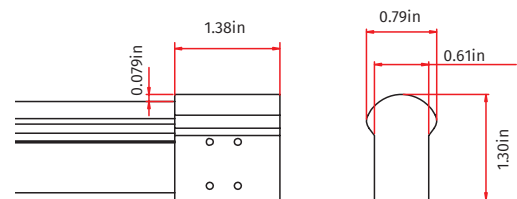
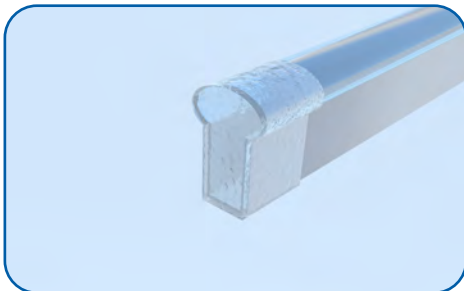
Front feed



Side feed



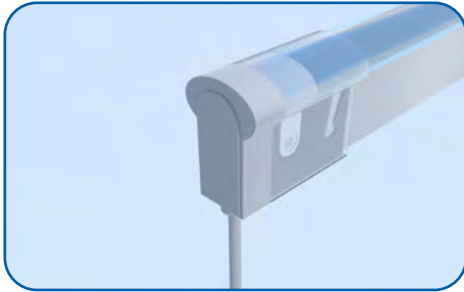
End Cap



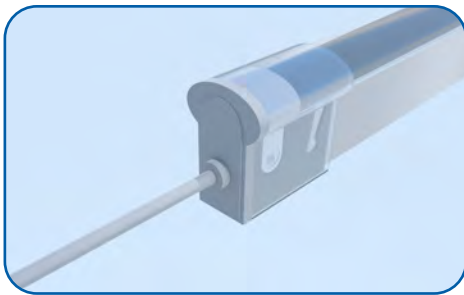
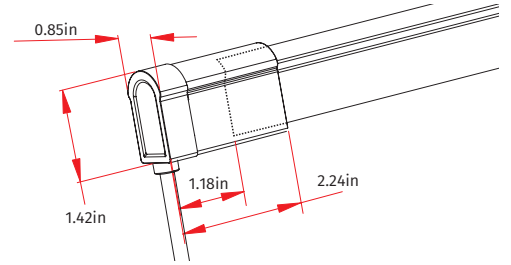
Accessories

Snap Connector

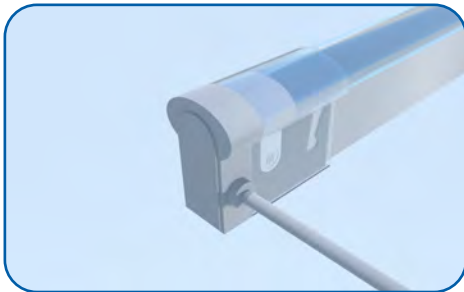
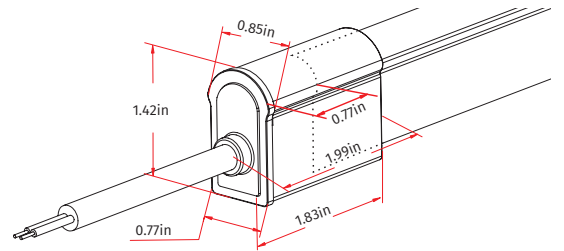
Front connector



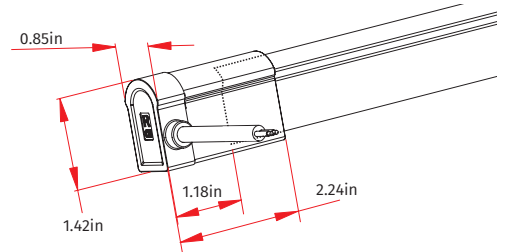
Bottom feed



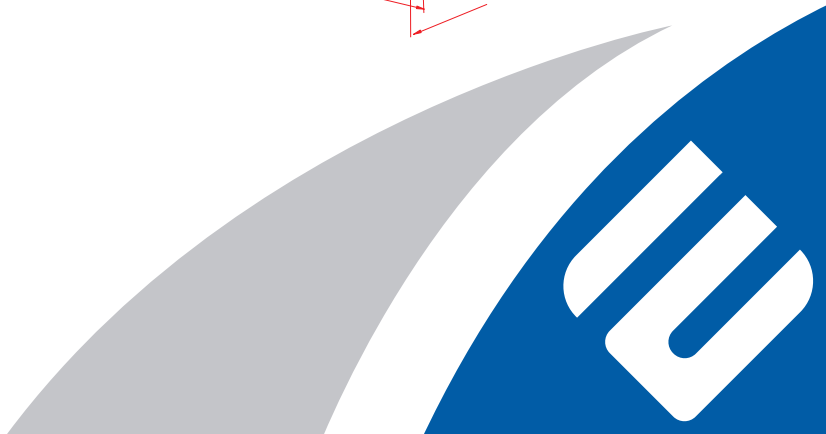
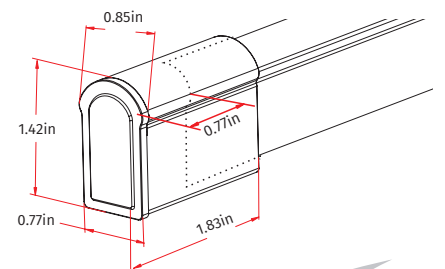
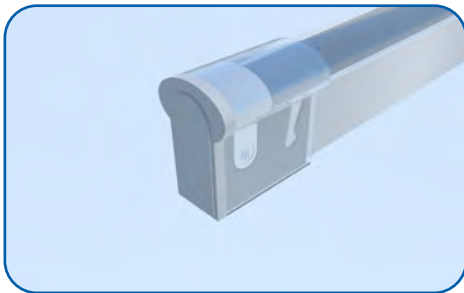
Front feed



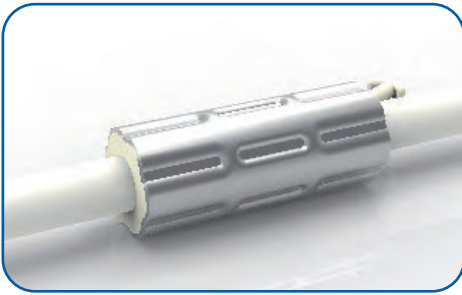
Side feed



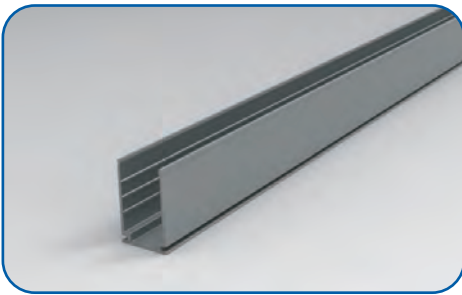
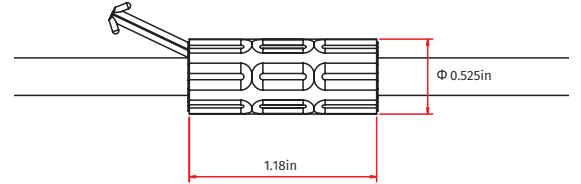
End Cap



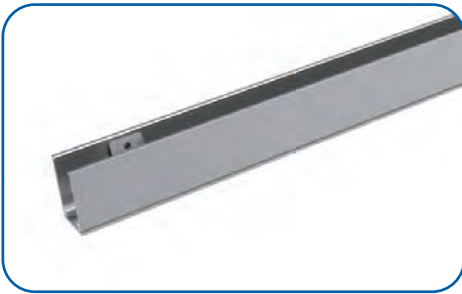
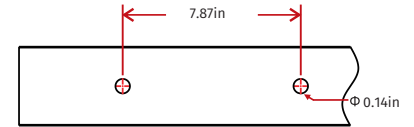
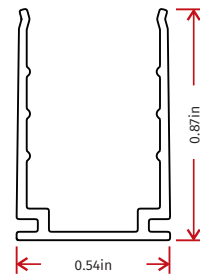
Accessories



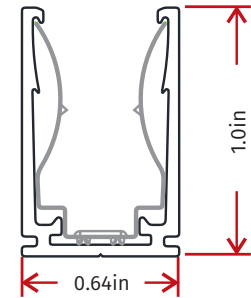
Waterproof ring



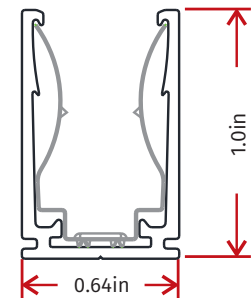
40" and 48" u-channel



48" lock u-channel



2" lock u-channel



Testing

Testing Organization		Certificate Serial N°	Report Reference
UL 2108	UL	20160726-E360029	E360029-2013
CE-EMC	SGS	SZEM1702001259LMV	SZEM160600421302

Fixture Testing

Optical Testing

Spectrum Analysis	IES LM 79 (Lumen, CCT, CRI, XY, SDCM, wavelength)
Photometric Distribution	IES LM 73 (lumen intensity distribution & Lux diagram)
Lumen Maintenance & Lifetime	IES LM84 & IES TM28

Temperature Testing

Normal Temperature Test	UL1598 & UL2388 & IEC60598-1 & IEC60598-2-21
Abnormal Operation Test	UL1598 & UL2388 & IEC60598-1 & IEC60598-2-21

Durability Testing

Bending Test	Manufacturer-defined, 500 cycles
Swing Test	UL2388, >750 cycles
Tensile Test	Manufacturer-defined, > the weight of light in max. connection length double feed
Twist Test	Max connection length double feed Manufacturer-defined, >200 cycles
Ball Impact	UL1598 & UL2388 & IEC60598-1 & IEC60598-2-21
IK07 IK08	IEC62262

Environmental Testing

Chlorinated Water Immersion	BG9667, PH6.8-7.6, free chlorine 0.3-0.6mg/L
Salt Water Immersion	IEC60598-1, Salinity 4%
Salt Spray Test	IEC68-2-11
Outdoor Exposure	Manufacturer-defined
Flame Resistance	UL94
UV Exposure	ASTMG 154, ISO 4892-3, UVA@340nm
IPX5 IPX6 IPX7 IPX8	IEC60529
Temperature Shock	Manufacturer-defined, -40°C -60°C (typical temperature range)
Constant Temperature	Manufacturer-defined

