

FLASH

Sign Box Lighting

OpticMax 4D Series



Technical Parameters

Item #	Color	Peak Wave Length	clip/ft	Lm/clip	Lm/ft	Lm/W	W/clip	Viewing Angle	Waterproof
F-SS-OM4D-W7HO-CP	Cool White	7000K	1	225	225	150	1.5	180°	IP66

Power Supply Maximum Loading Capacity*

1.5 Watt LED

Power Supply	60W	100W	150W	200W
By Module	36	60	90	120
By Footage	36	60	90	120

*Due to voltage drop, a maximum of 50 modules can be run before power needs to be reintroduced into the line of modules.

Warranty Policy



Spacing Recommendations

*Spacing based on fully extended center to centers.

Single Sided Depth	Clearance	Run Gap
6-8"	8"	16"
9-13"	12"	24"
14-20"	15"	30"

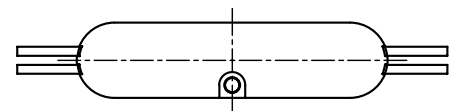
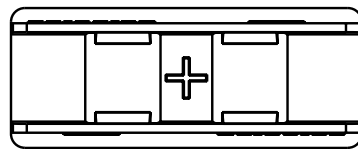
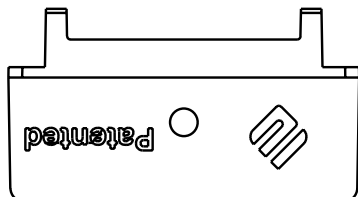
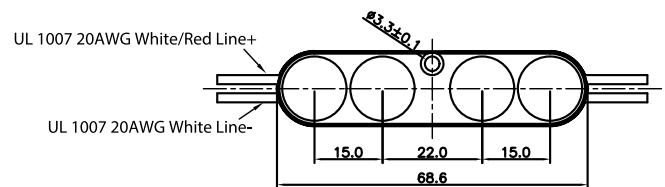
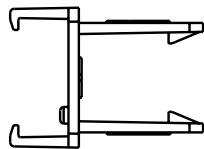
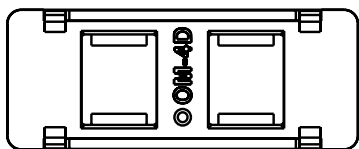
*For shallower depths or brighter output, modules will need a smaller center to center

Clip Installation

Nominal Length	Extrusion Length	Clips	Total Lumens	Total Wattage
48"	44"	5	1125	7.5
60"	56"	6	1350	9
72"	68"	7	1575	10.5
96"	92"	9	2025	13.5
120"	116"	11	2475	16.5

Drawing

UNITS: Millimeters



Packaging

Model No.	Carton Size	PCS/Bag	Mod/Carton Box	Bag Weight (kg)	Carton Weight (kg)	Date Updated
F-SS-OM4D-W7HO-CP	67 cm x 39 cm x26 cm	100 clips	500 clips	2	10	10/14/2022