

Date:

Type:

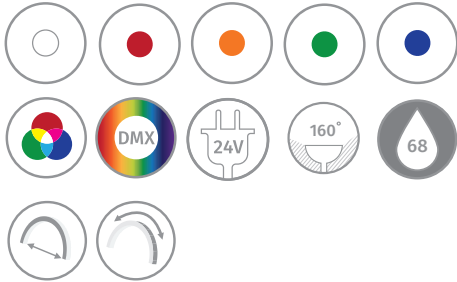
Firm Name:

Project:

EVERNEON

Freedom Series

Everylite Datasheet Ver 3.0.1
Revision Date 07/2022



Description

This series truly honors its name. Freedom creates amazing new possibilities, and because of its square shape and versatility in offering more than one bending option, you can interchange them in the same application to achieve different possibilities in corners or shapes.

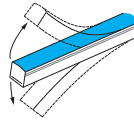
This product can perform exceptionally in architectural applications such as border lighting, or advanced bending shapes including vertical and horizontal. It also provides a seamless look.

Features

- 160° degree beam angle perfect for recessed installation
- Built in constant current circuit board keeps even illumination without voltage drop
- Available in single color, DMX or RGB options
- Horizontal and vertical bending available with a 11.81" bending diameter

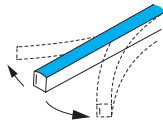


EverNeon Freedom Series Specification



Vertical Bending

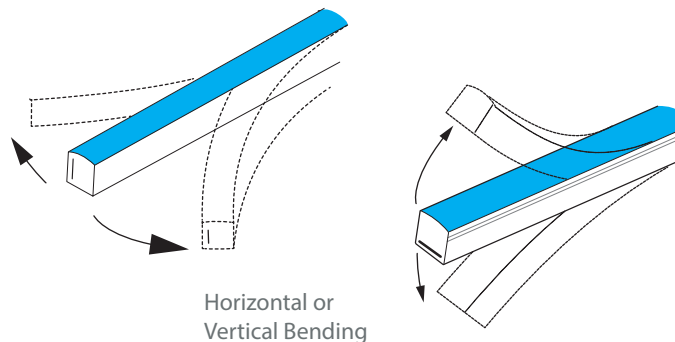
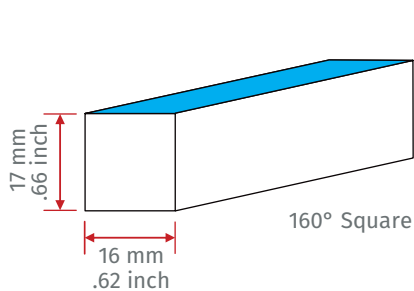
Item #	Wave Length	LED Color	Surface Color	Min. Cutting Length	Luminous Flux/Ft	Power Consumption	Working Voltage	IP Rating	Min. Bend Diameter	LED Spacing	Max. Single Power Feed	Max. Double Power Feed
EN-FDM-W3-PV-24	3000K	White	White	2.19"	164.7lm/ft	4W/ft	24 VDC	IP68	11.81"	0.36"	30'	60'
EN-FDM-W4-PV-24	4000K	White	White	2.19"	166.4lm/ft	4W/ft	24 VDC	IP68	11.81"	0.36"	30'	60'
EN-FDM-W5-PV-24	5000K	White	White	2.19"	163.18lm/ft	4W/ft	24 VDC	IP68	11.81"	0.36"	30'	60'
EN-FDM-W6-PV-24	5700K	White	White	2.19"	151.5lm/ft	4W/ft	24 VDC	IP68	11.81"	0.36"	30'	60'
EN-FDM-RW-PV-24	630nm	Red	White	3.28"	56.56lm/ft	4W/ft	24 VDC	IP68	11.81"	0.36"	30'	60'
EN-FDM-GW-PV-24	530nm	Green	White	2.19"	155.3lm/ft	4W/ft	24 VDC	IP68	11.81"	0.36"	30'	60'
EN-FDM-BW-PV-24	475nm	Blue	White	2.19"	24.86lm/ft	4W/ft	24 VDC	IP68	11.81"	0.36"	30'	60'
EN-FDM-AA-PV-24	595nm	Amber	White	3.28"	53.58lm/ft	4W/ft	24 VDC	IP68	11.81"	0.36"	30'	60'
EN-FDM-FX-PV-24	-	RGB	White	3.28"	-	4W/ft	24 VDC	IP68	11.81"	0.36"	15'	30'
EN-FDM-FW-PV-24	-	RGBW	White	3.28"	-	4W/ft	24 VDC	IP68	11.81"	0.36"	15'	30'
EN-FDM-FXS-PV-24	-	Smart RGB	White	3.28"	-	4W/ft	24 VDC	IP68	11.81"	0.36"	30'	60'
EN-FDM-FWS-PV-24	-	Smart RGBW	White	3.28"	-	4W/ft	24 VDC	IP68	11.81"	0.36"	30'	60'



Horizontal Bending

Item #	Wave Length	LED Color	Surface Color	Min. Cutting Length	Luminous Flux/Ft	Power Consumption	Working Voltage	IP Rating	Min. Bend Diameter	LED Spacing	Max. Single Power Feed	Max. Double Power Feed
EN-FDM-W3-PH-24	3000K	White	White	2.19"	164.7lm/ft	4W/ft	24 VDC	IP68	11.81"	0.36"	30'	60'
EN-FDM-W4-PH-24	4000K	White	White	2.19"	166.4lm/ft	4W/ft	24 VDC	IP68	11.81"	0.36"	30'	60'
EN-FDM-W5-PH-24	5000K	White	White	2.19"	163.18lm/ft	4W/ft	24 VDC	IP68	11.81"	0.36"	30'	60'
EN-FDM-W6-PH-24	5700K	White	White	2.19"	151.5lm/ft	4W/ft	24 VDC	IP68	11.81"	0.36"	30'	60'
EN-FDM-RW-PH-24	630nm	Red	White	3.28"	56.56lm/ft	4W/ft	24 VDC	IP68	11.81"	0.36"	30'	60'
EN-FDM-GW-PH-24	530nm	Green	White	2.19"	155.3lm/ft	4W/ft	24 VDC	IP68	11.81"	0.36"	30'	60'
EN-FDM-BW-PH-24	475nm	Blue	White	2.19"	24.86lm/ft	4W/ft	24 VDC	IP68	11.81"	0.36"	30'	60'
EN-FDM-AA-PH-24	595nm	Amber	White	3.28"	53.58lm/ft	4W/ft	24 VDC	IP68	11.81"	0.36"	30'	60'
EN-FDM-FX-PH-24	-	RGB	White	3.28"	-	4W/ft	24 VDC	IP68	11.81"	0.36"	15'	30'
EN-FDM-FW-PH-24	-	RGBW	White	3.28"	-	4W/ft	24 VDC	IP68	11.81"	0.36"	15'	30'
EN-FDM-FXS-PH-24	-	Smart RGB	White	3.28"	-	4W/ft	24 VDC	IP68	11.81"	0.36"	30'	60'
EN-FDM-FWS-PH-24	-	Smart RGBW	White	3.28"	-	4W/ft	24 VDC	IP68	11.81"	0.36"	30'	60'

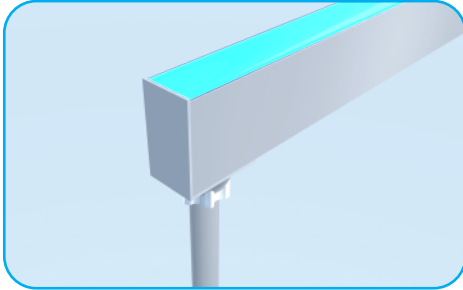
Drawing



Accessories

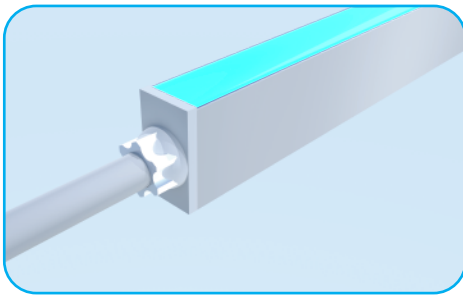
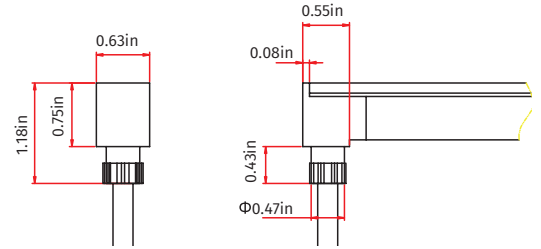
Single injection mold (IP67)

Front connector



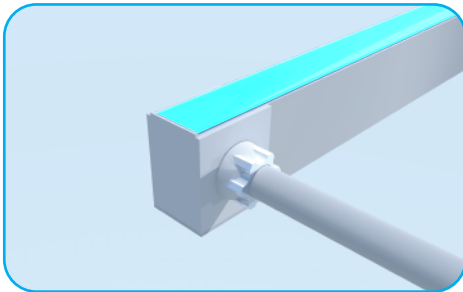
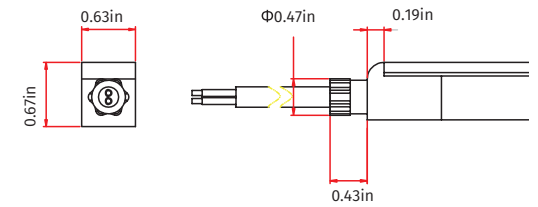
Bottom feed

EN-FC-SI-XB



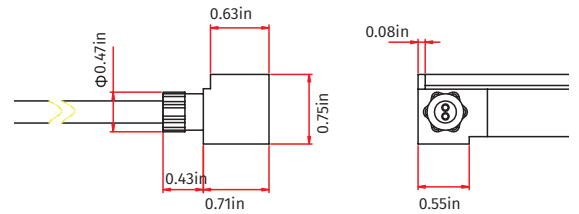
Front feed

EN-FC-SI-XF

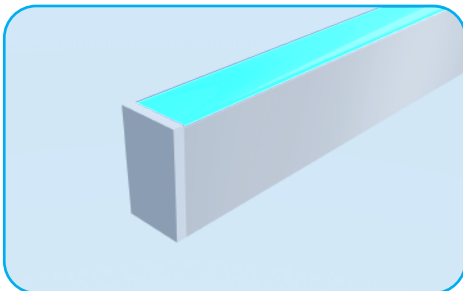


Side feed

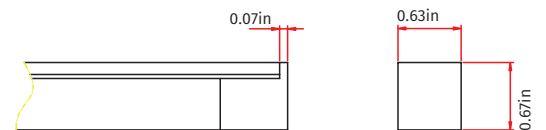
EN-FC-SI-XS



End Cap



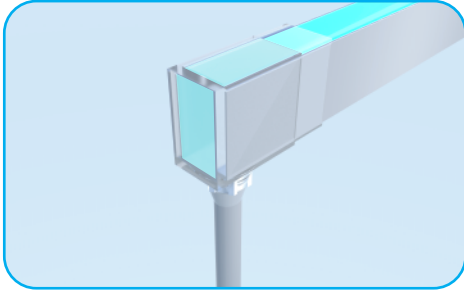
EN-EC-SI



Accessories

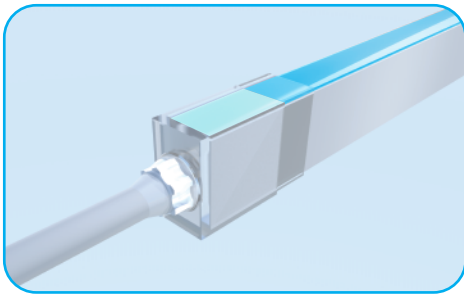
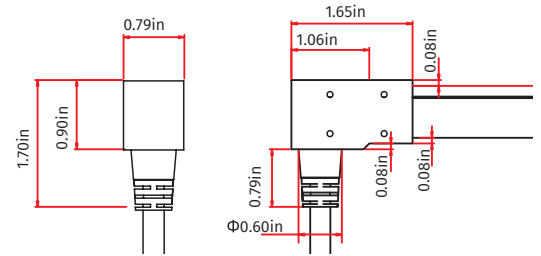
Double Injection Mold (IP68)

Front connector



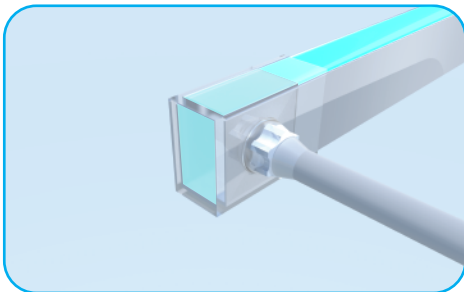
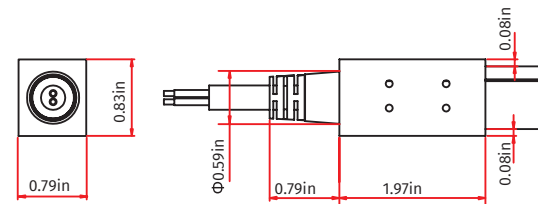
Bottom feed

EN-FC-DI-XB



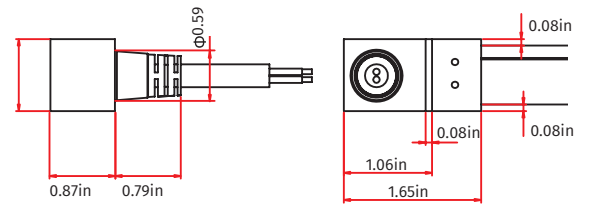
Front feed

EN-FC-DI-XF

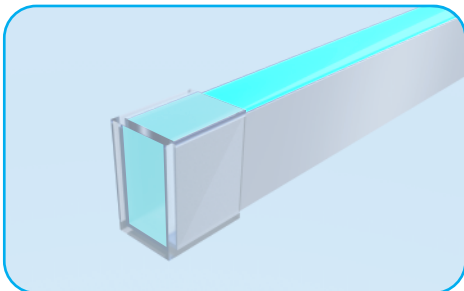


Side feed

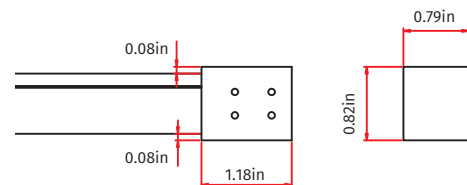
EN-FC-DI-XS



End Cap



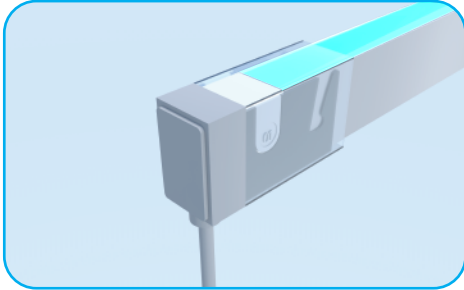
EN-EC-DI



Accessories

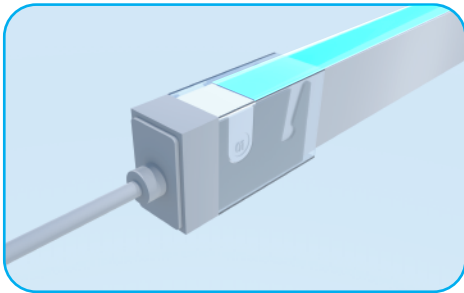
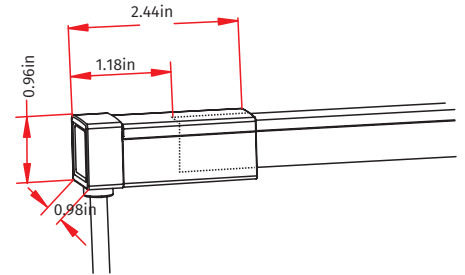
Snap Connector (IP65)

Front connector



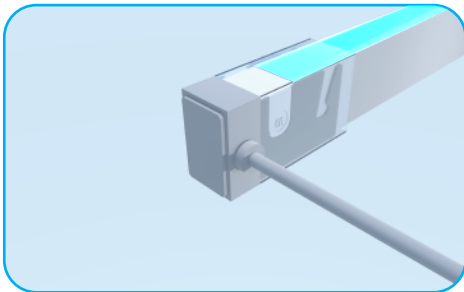
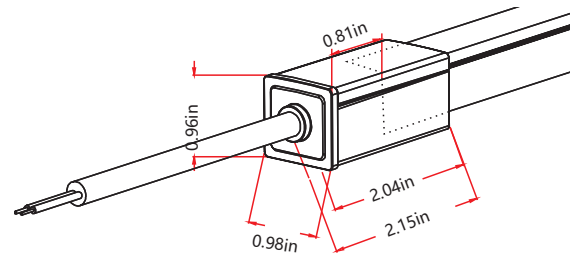
Bottom feed

EN-FDM-FCXX-SN-XB



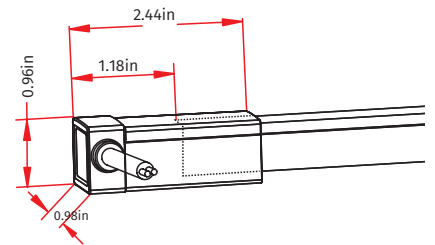
Front feed

EN-FDM-FCXX-SN-XF

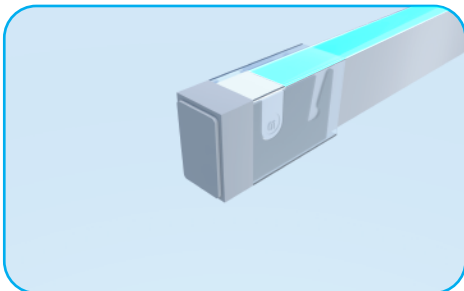


Side feed

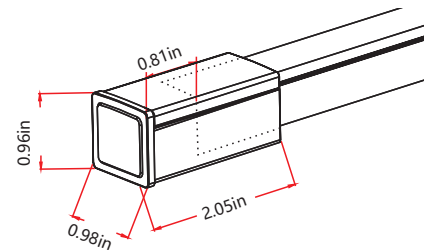
EN-FDM-FCXX-SN-XS



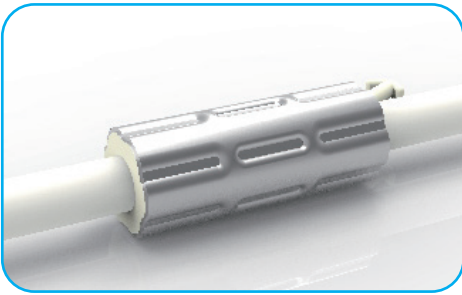
End Cap



EN-FDM-ECXX-X

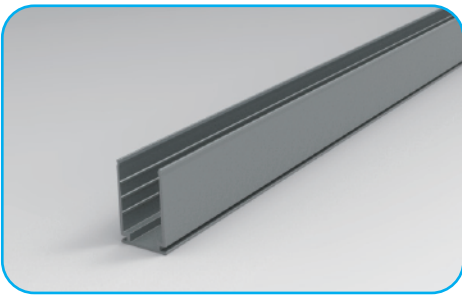
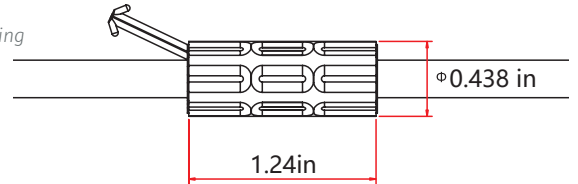


Accessories



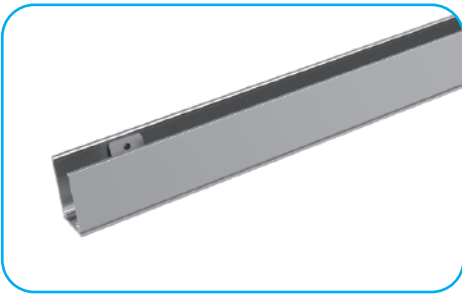
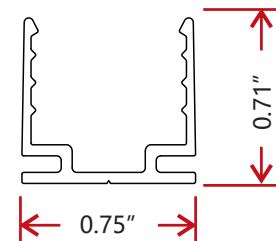
Waterproof ring

This specially engineered waterproofing ring come standard mounted on the power leads to prevent water-intrusion through the cable.



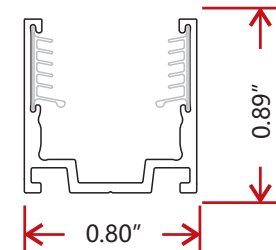
40" u-channel

This standard easy to use mounting track for the Everneon Series firmly holds the product into place and can be cut to any desired length.



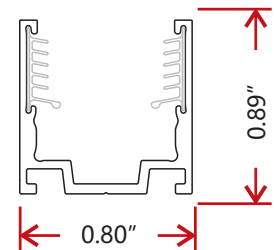
40" locking u-channel

The locking version of the standard mounting track brings peace of mind to installations where having a secure fit was a concern.



2"locking u-channel

This smaller version of the locking u-channel can be used to hold the Everneon product in place while maneuvering around the curves of the installation.



Testing

	Testing Organization	Certificate Serial N°	Report Reference
UL 2108	UL	20160726-E360029	E360029-2013
CE-EMC	SGS	SZEM1702001259LMV	SZEM160600421302

Fixture Testing

Optical Testing

Spectrum Analysis	IES LM 79 (Lumen, CCT, CRI, XY, SDCM, wavelength)
Photometric Distribution	IES LM 73 (lumen intensity distribution & Lux diagram)
Lumen Maintenance & Lifetime	IES LM84 & IES TM28

Temperature Testing

Normal Temperature Test	UL1598 & UL2388 & IEC60598-1 & IEC60598-2-21
Abnormal Operation Test	UL1598 & UL2388 & IEC60598-1 & IEC60598-2-21

Durability Testing

Bending Test	Manufacturer-defined, 500 cycles
Swing Test	UL2388, >750 cycles
Tensile Test	Manufacturer-defined, > the weight of light in max. connection length double feed
Twist Test	Max connection length double feed Manufacturer-defined, >200 cycles
Ball Impact	UL1598 & UL2388 & IEC60598-1 & IEC60598-2-21
IK07 IK08	IEC62262

Environmental Testing

Chlorinated Water Immersion	BG9667, PH6.8-7.6, free chlorine 0.3-0.6mg/L
Salt Water Immersion	IEC60598-1, Salinity 4%
Salt Spray Test	IEC68-2-11
Outdoor Exposure	Manufacturer-defined
Flame Resistance	UL94
UV Exposure	ASTMG 154, ISO 4892-3, UVA@340nm
IPX5 IPX6 IPX7 IPX8	IEC60529
Temperature Shock	Manufacturer-defined, -40°C -60°C (typical temperature range)
Constant Temperature	Manufacturer-defined

